

Introduction

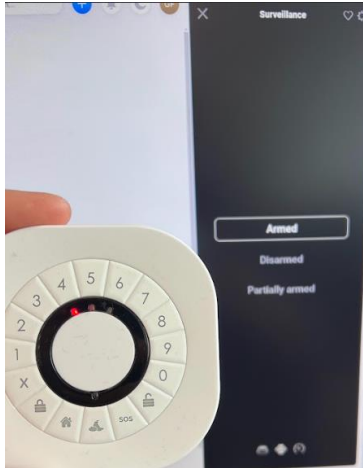
The updated frient app (v2.4.0) and Heimdall app (v2.10.14) for Homey bring the possibility of using a frient Intelligent Keypad as a control panel for the Heimdall system app.

Contents

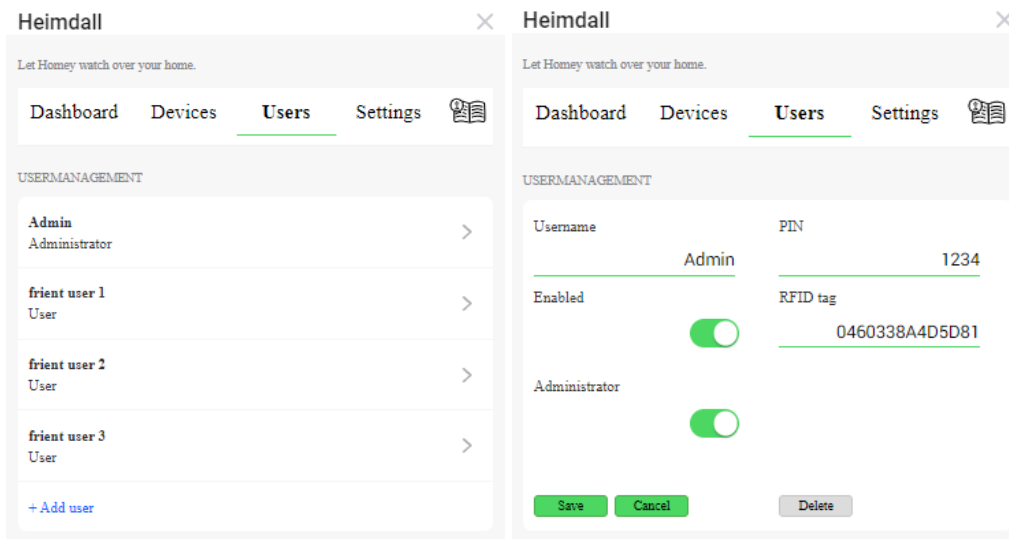
| | |
|--|----|
| Introduction..... | 1 |
| Integration features..... | 2 |
| Getting started..... | 4 |
| Installing Heimdall app..... | 4 |
| Installing the frient app..... | 4 |
| Setting the Intelligent Keypad to work with Heimdall..... | 5 |
| Adding new user(s)..... | 6 |
| Assigning RFID tags to each user..... | 7 |
| Setting up devices within alarm modes..... | 11 |
| Automation examples..... | 12 |
| Changing Intelligent Keypad modes remotely via flow..... | 12 |
| Locking smart lock with Intelligent Keypad & Heimdall..... | 12 |
| Unlocking smart lock with Intelligent Keypad & Heimdall..... | 13 |

Integration features

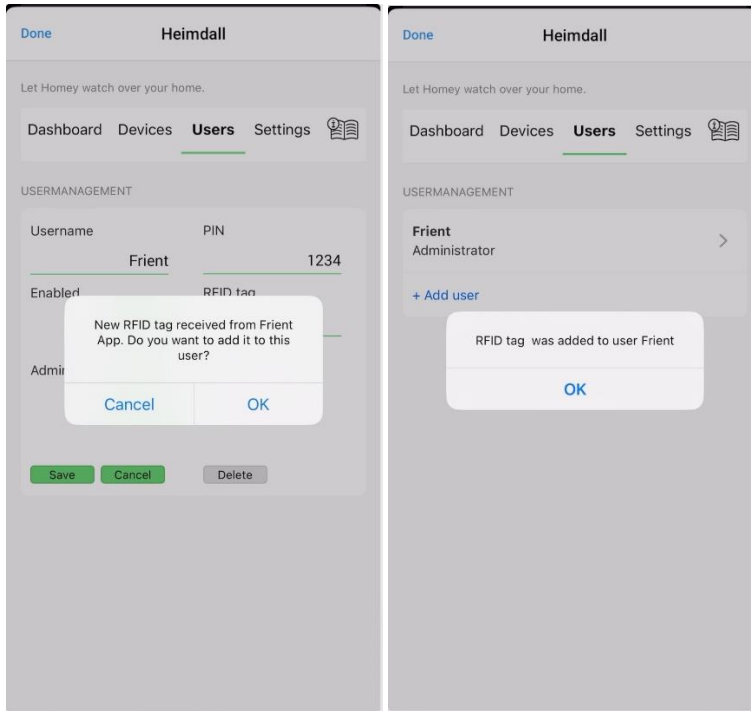
1. By changing the Heimdall surveillance modes in the app or via a flow – the Intelligent Keypad mode will follow and change accordingly, allowing you to remotely manipulate the device’s state.



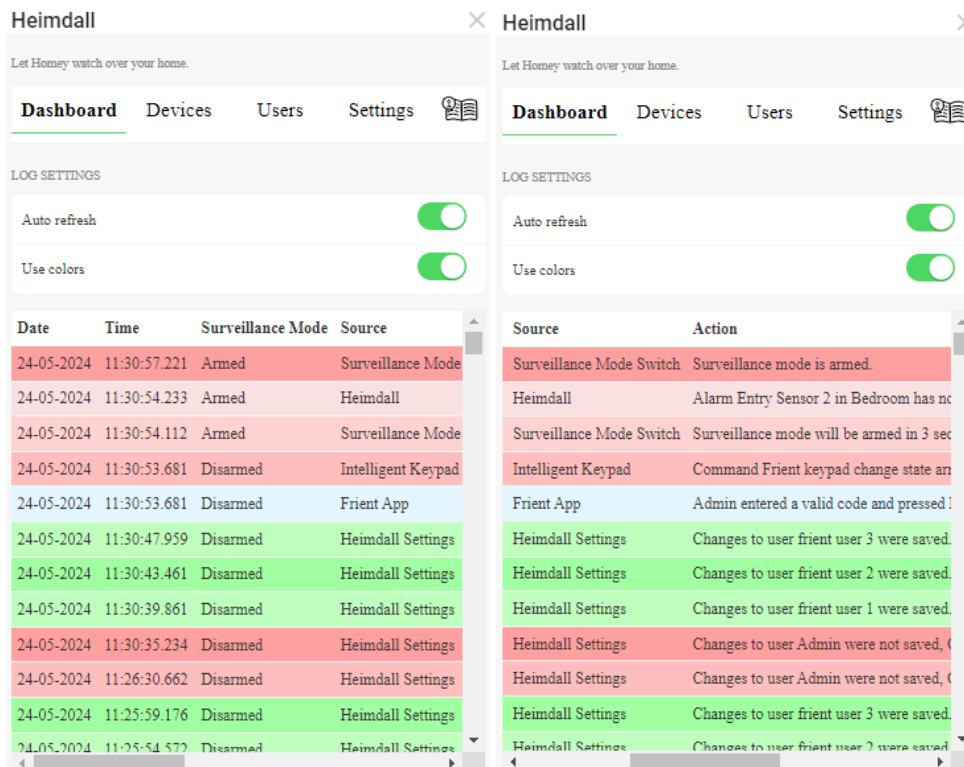
2. When physically changing the Intelligent Keypad modes, the Heimdall surveillance modes will change accordingly.
3. Now, in Heimdall app settings, you can create multiple users who intend to use the Intelligent Keypad and for each of them assign a specific PIN code and RFID tag.



4. No need to manually type in the RFID tag number – you can scan it with the device, and automatically assign it to the selected user in Heimdall app settings.



- Track what happens with your Intelligent Keypad and your home in the Heimdall dashboard overview.



- Integration with Heimdall brings major flexibility when using Homey flows, allowing you to automate your system fully.

You can see automation examples later in this document.

Getting started

Installing Heimdall app

The first step is to install the latest release of the Heimdall app for Homey.

The integration with frient starts with the Heimdall version 2.10.14.

You can find the Heimdall app by going to the [Homey App Store](#) and searching for “Heimdall”.

The next step is to install the app, by clicking on “Install App”, logging in, and selecting your Homey device.



Heimdall

Turn your Homey into a surveillance system

Danee de Kruyff [Community](#) | [Thanks](#) | [Donate](#)

[Install App](#)



All detected motion and open/closed doors and windows on selected sensors will be seen by Heimdall. All these events will be logged and when Heimdall is in a Surveillance Mode the alarm will be triggered..

Supported Languages

en English
da Dansk
de Deutsch
es Español...
[Read more >](#)

Supported devices



Alarm




Mode

Installing the frient app

The next step is to install the latest release of the frient app for Homey. In [Homey App Store](#), search for frient, and install the app on your Homey device.

The integration with Heimdall starts with the frient app version 2.4.0.



frient
High-quality sensors, alarms, and smart plugs
frient A/S Official | [Besøg hjemmeside](#)

Installer



Gain wireless control of your home, keep your family safe, and become more energy aware with wide range of frient devices.

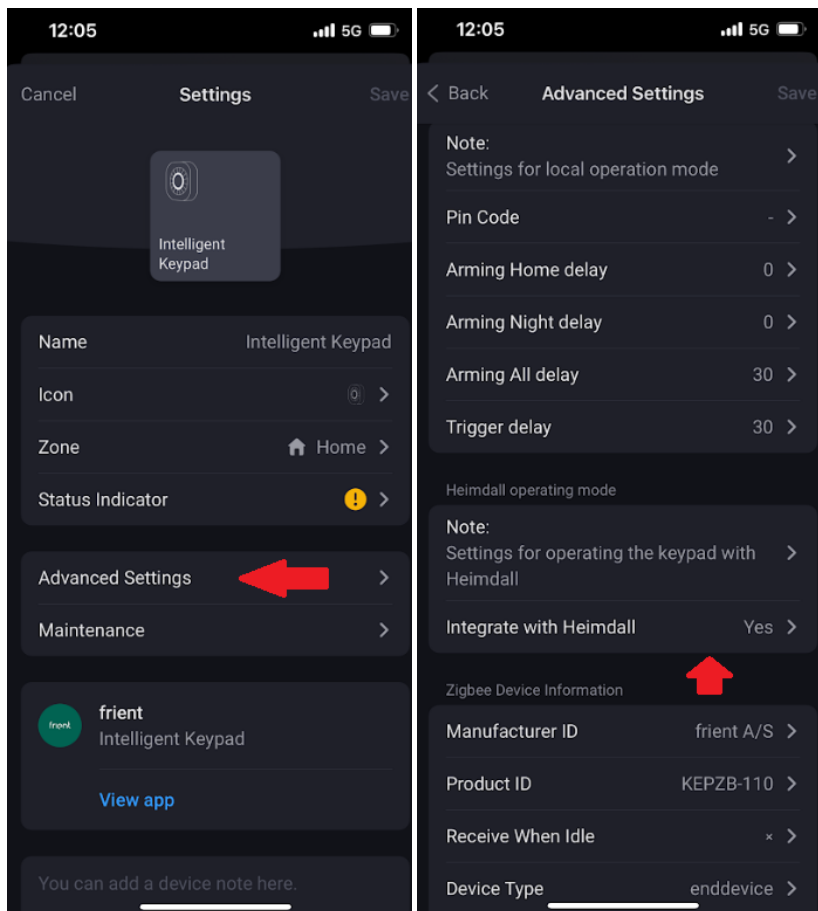
Connect your frient devices with Homey and start living the smart life.

Use the frient sensors and alarms to monitor and control your home. Keep track of your energy consumption and turn on/off your electrical appliances with the smart plug or the smart cable.

Setting the Intelligent Keypad to work with Heimdall

Once both apps have been installed – pair the device with your Homey and go to the device’s “Settings” and “Advanced Settings”.

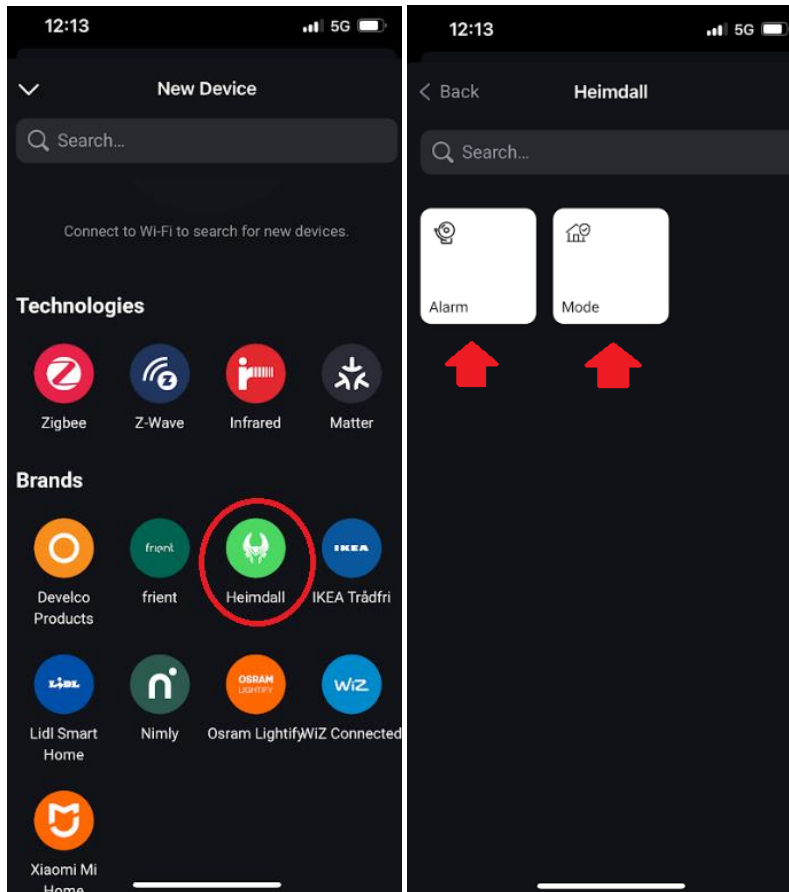
In there, toggle the “Integrate with Heimdall” to “Yes”.



Please note that now the device will work only with Heimdall, therefore it won't be possible to use it in local mode.

To switch back to local mode – simply turn off the Heimdall integration switch.

Now, add a new device by clicking on the plus symbol, select Heimdall as a manufacturer, and add both – “Alarm” and “Mode” components.



When done, you will see the “Surveillance” object in your Homey dashboard. This is a control panel for your Heimdall system.

Changing the modes there will cause the mode to change on your Intelligent Keypad, and vice versa (with a valid PIN code and/or RFID tag).

Adding new user(s) and assigning PIN codes to them

In your Homey app, simply click on three dots in the bottom right corner, select “Apps”, find the Heimdall app, and click on it.

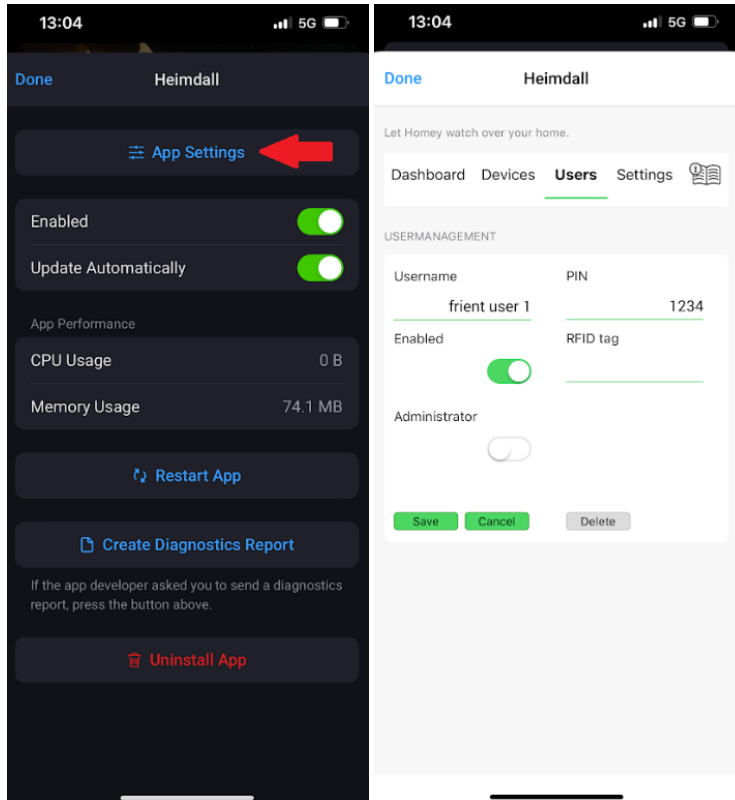
Next, click on the gear icon in the top right corner, and go to “App Settings” – you should now see the Heimdall dashboard overview.

Select the tab called “Users” and click on the “+ Add user” button at the bottom.

Fill in the username and assign a PIN code for the user – when done click Save.

This PIN code will now allow the user you just added to change the modes on the device.

As an admin, you will be able to see in the dashboard overview when this user interacts with the device or the Heimdall system.

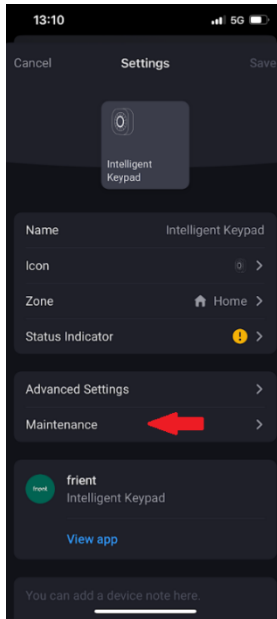


Assigning RFID tags to each user

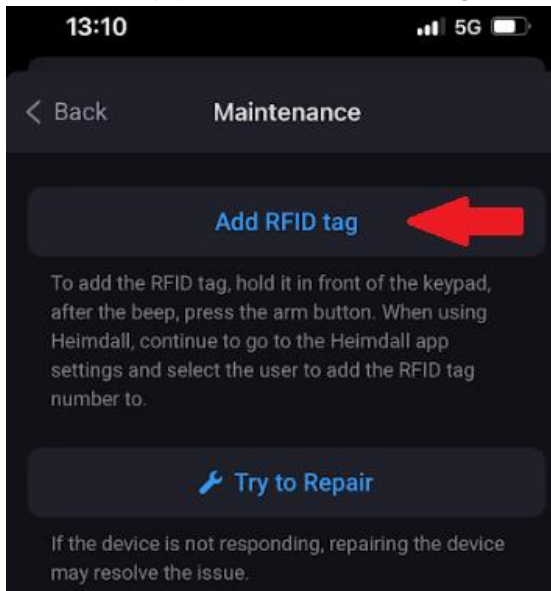
To assign an RFID tag for a specific user, you don't have to manually type in the number.

Instead, you can follow this guide:

1. From your Homey devices overview, select Intelligent Keypad, click on the gear icon in the top right corner, and select "Maintenance":



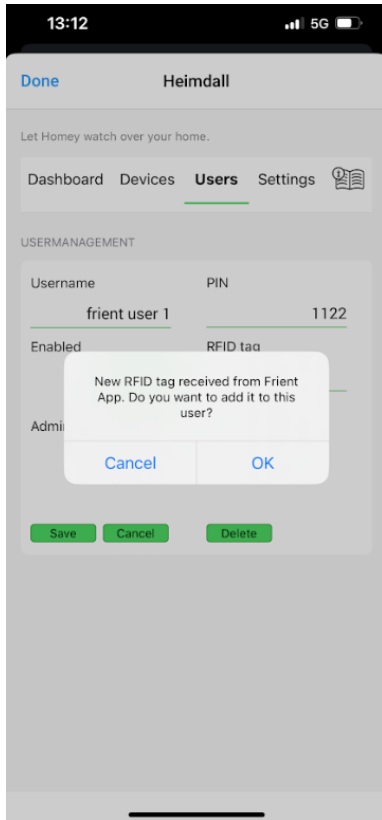
2. In here, simply click on “Add RFID tag” button:



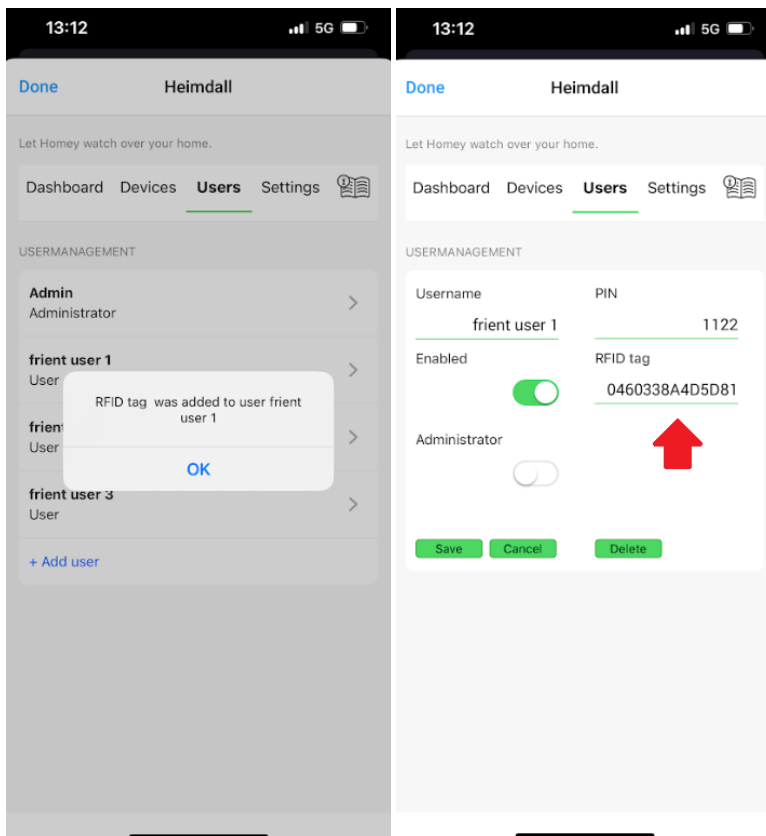
3. Apply the desired RFID tag onto the surface in the middle of your device, and when you hear a beep click on the “Arm all” button, as shown below:



4. Now head back to your Heimdall app settings, go to “Users”, select the user you wish the RFID tag to be assigned to, and you should see the following pop-up window – click “Ok”:



5. The RFID tag has been successfully assigned to the selected user:

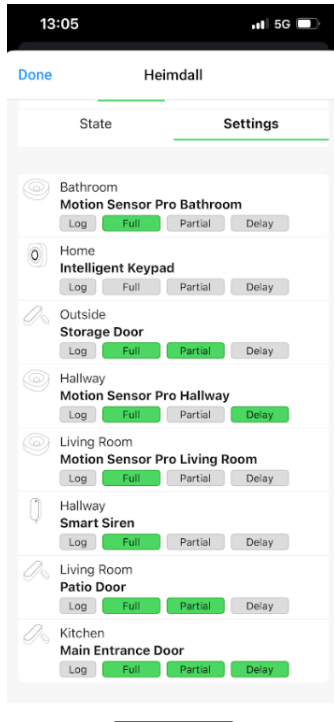


Setting up devices within alarm modes

With the Heimdall app and frient devices, you can easily select in which alarm modes the devices will trigger an alarm.

To do that, simply go to your Heimdall app settings, go to “Devices”, and select “Settings”.

Here you can customize each device and its role in your system:

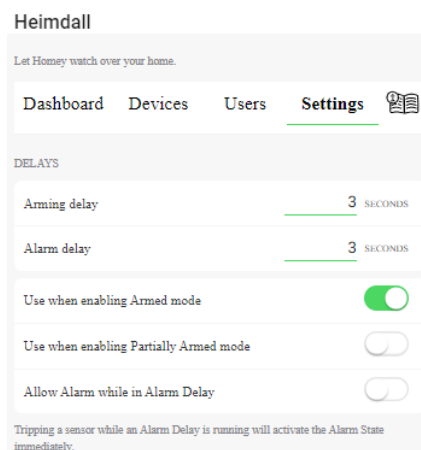


“Log” – you can use it to collect readings from the sensor which later you can see in your Heimdall dashboard overview.

“Full” – stands for assigning the sensor to an “Armed” mode.

“Partial” – you use for assigning the sensor to trigger in a “Partially armed” mode.

“Delay” – adds additional delay which you can customize in Heimdall’s main app settings before the sensor triggers the alarm.



Automation examples

Changing modes remotely via flow

Changing modes remotely via flow.

When...

- Flow This Flow is started

And...

- + Add Card

Then...

- Surveillance - Home Set Surveillance Mode to Armed

This will change both - the device's mode and the Heimdall mode.

+ Add Card

Test Save

Locking smart lock with Intelligent Keypad & Heimdall

Locking smart lock with Intelligent Keypad & Heimdall

When...

- Surveillance - Home The state changed Armed

And...

- + Add Card

Then...

- Nimly Touch Pro - Kitchen Lock

+ Add Card

Test Save

Unlocking smart lock with Intelligent Keypad & Heimdall

Important note:

Even if the mode is already “Disarmed”, disarming it again will result in the same action you choose (e.g. door unlock).

Unlocking smart lock with Intelligent Keypad & Heimdall

When...

Heimdall 🔔 🔒
Surveillance Mode changed.

And...

Surveillance - Home
The state is Disarmed

+ Add Card

Then...

Nimly Touch Pro - Kitchen
Unlock

+ Add Card

▶ Test

✓ Save

This flow will make your Homey perform the "Unlock" action even if the system is already disarmed.